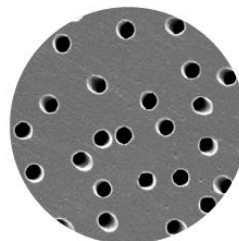


PRODUCT SPECIFICATION

Product PN	1215324, 1221413, 1215183, 1221414, 1221415, 1221416, 1222256	Mod. 984
Description	5.0 µm Polyester Track-Etched Membrane Discs and Sheets	Rev. 02

5.0 um Polyester Track Etched Membrane



PRODUCT DESCRIPTION	5.0 um PETE Discs and Sheets			
	Part Number	Geometry	Dimensions	Packaging
	1222256	Sheet	203x254mm	30/Pk
	1215324	Discs	13 mm	100/pk
	1221413	Discs	25 mm	100/pk
	1215183	Discs	47 mm	100/pk
	1221414	Discs	90 mm	30/pk
	1221415	Discs	142 mm*	20/pk
	1221416	Discs	293 mm	20/pk
	*Bulk packaging available			
MANUFACTURER	GVS North America, Inc. 63 Community Drive Sanford, ME 04073 Phone: +1.866.736.1250 Email: CustomerCareGVSLs@gvs.com Website: www.gvs.com			
INTENDED USE/ APPLICATION	Typical Applications <ul style="list-style-type: none">• General filtration• Removal of red blood cells from plasma• Flow control of reagents through assays• Precise filtration and pre-filtration• Air analysis• Filtration of aggressive solutions• Cellular assays and diagnostics• Trace element analysis			
MATERIALS	Film: Polyester Track Etched Membrane Regulatory Documentation Required: <ul style="list-style-type: none"><input type="checkbox"/> Biocompatibility according ISO 10993-1<input type="checkbox"/> IMDS<input checked="" type="checkbox"/> Rohs, directive 2002/95/CE<input checked="" type="checkbox"/> BSE/TSE, directive 2003/32/CE<input type="checkbox"/> DEHP plasticizer and latex free<input type="checkbox"/> Aging<input checked="" type="checkbox"/> Reach 1907/2006/CE (hazardous substances regulation)<input type="checkbox"/> Dir. 67/548/CE and Reg. 1272/2008/CE (medical sector dangerous substances)<input checked="" type="checkbox"/> Conflict minerals<input checked="" type="checkbox"/> USP Class VI			
PRODUCT	Nominal Characteristics:			



PRODUCT SPECIFICATION

Product PN	1215324, 1221413, 1215183, 1221414, 1221415, 1221416, 1222256	Mod. 984
Description	5.0 µm Polyester Track-Etched Membrane Discs and Sheets	Rev. 02

CHARACTERISTICS

Attribute	Result
Water Adsorption (% wt. gain 24 hr immersion)	0.24%
Migration of Filter Media	0
Autoclavable	Yes
Optical Properties	Semi-translucent
Residual Ash Weight Average	0.92 µg/cm ²
Leachables	Negligible
Wetting Characteristics	Naturally Hydrophilic
Burst Strength Minimum	0.7 bar (10 psi)
Thickness	10-20 µm

PRODUCT SHELF LIFE

5 years in normal storage conditions:
Store the product at room temperate, in a dry place, free of dust and not exposed to direct sunlight.

STERILIZATION

This product is compatible with these sterilization techniques:

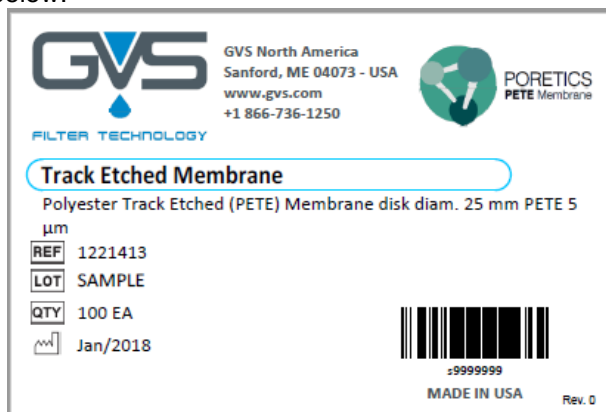
- ☒ EtO
- ☒ Gamma (25 kGy)
- ☒ Autoclave (121°C)
- *Sterilization is not required

PACKAGING AND LABELING

Product	Interior package	Exterior package
13, 25, 47 mm Discs	Discs separated by blue paper in a thermoformed tray	Clear/white plastic box
90, 142, 293 mm Disc	Discs separated by blue paper	Round container
203 x 254 mm sheet	Sheets separated by blue paper	White mailer

- Each configuration will be labeled with:
 - Quantity
 - Product item code and description
 - Manufacturing date
 - Lot number
 - Storage conditions

Example label below:




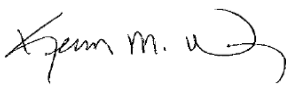


PRODUCT SPECIFICATION

Product PN	1215324, 1221413, 1215183, 1221414, 1221415, 1221416, 1222256	Mod. 984
Description	5.0 µm Polyester Track-Etched Membrane Discs and Sheets	Rev. 02

CERTIFICATE OF COMPLIANCE	A conformity declaration will be sent to the customer for each shipment with the lot number and date of manufacture. The Quality management system is in compliance with ISO 9001.																										
VISUAL REQUIREMENTS	<i>Visual acceptance requirements apply when inspected under the below conditions:</i> Magnification: None Light type: Standard <table><tr><th colspan="3">Acceptance Requirement</th><th>Sampling Plan</th></tr><tr><td>1</td><td>Creases/Folds: lines which do not disappear when the membrane is placed under tension</td><td>None</td><td rowspan="6">100% inspection</td></tr><tr><td>2</td><td>Cracks: areas where the membrane is bent to the point of fracture</td><td>None</td></tr><tr><td>3</td><td>Pinholes: openings or perforations in the membrane</td><td>None</td></tr><tr><td>4</td><td>Tension Lines: lines which disappear when the membrane is placed under tension</td><td>Max. 3 (not continuous)</td></tr><tr><td>5</td><td>Wrinkles (A): wavy surfaces which disappear when the membrane is placed under tension</td><td>Minimal</td></tr><tr><td>6</td><td>Wrinkles (B): wavy surfaces which do not disappear when the membrane is placed under tension</td><td>None</td></tr></table>				Acceptance Requirement			Sampling Plan	1	Creases/Folds: lines which do not disappear when the membrane is placed under tension	None	100% inspection	2	Cracks: areas where the membrane is bent to the point of fracture	None	3	Pinholes: openings or perforations in the membrane	None	4	Tension Lines: lines which disappear when the membrane is placed under tension	Max. 3 (not continuous)	5	Wrinkles (A): wavy surfaces which disappear when the membrane is placed under tension	Minimal	6	Wrinkles (B): wavy surfaces which do not disappear when the membrane is placed under tension	None
Acceptance Requirement			Sampling Plan																								
1	Creases/Folds: lines which do not disappear when the membrane is placed under tension	None	100% inspection																								
2	Cracks: areas where the membrane is bent to the point of fracture	None																									
3	Pinholes: openings or perforations in the membrane	None																									
4	Tension Lines: lines which disappear when the membrane is placed under tension	Max. 3 (not continuous)																									
5	Wrinkles (A): wavy surfaces which disappear when the membrane is placed under tension	Minimal																									
6	Wrinkles (B): wavy surfaces which do not disappear when the membrane is placed under tension	None																									
PERFORMANCE REQUIREMENTS	<table><tr><th colspan="2">Acceptance Requirement</th><th>Specification</th><th>Master Roll Sampling Plan</th></tr><tr><td>1</td><td>Pore Size (µm)</td><td>4.0 – 5.0</td><td>left, middle, & right every 120m</td></tr><tr><td>2</td><td>Pore Density (pores/cm²)</td><td>4.0x10E5±15%</td><td>left, middle, & right every 120m</td></tr><tr><td>3</td><td>Air Flow (L/min/cm² @ 5 psi)</td><td>≥30</td><td>left, middle, & right every 120m</td></tr><tr><td>4</td><td>Bubble Point (psi) (measured using IPA)</td><td>≥1.2 (0.8 bar)</td><td>left, middle, & right every 120m</td></tr></table>				Acceptance Requirement		Specification	Master Roll Sampling Plan	1	Pore Size (µm)	4.0 – 5.0	left, middle, & right every 120m	2	Pore Density (pores/cm²)	4.0x10E5±15%	left, middle, & right every 120m	3	Air Flow (L/min/cm² @ 5 psi)	≥30	left, middle, & right every 120m	4	Bubble Point (psi) (measured using IPA)	≥1.2 (0.8 bar)	left, middle, & right every 120m			
Acceptance Requirement		Specification	Master Roll Sampling Plan																								
1	Pore Size (µm)	4.0 – 5.0	left, middle, & right every 120m																								
2	Pore Density (pores/cm²)	4.0x10E5±15%	left, middle, & right every 120m																								
3	Air Flow (L/min/cm² @ 5 psi)	≥30	left, middle, & right every 120m																								
4	Bubble Point (psi) (measured using IPA)	≥1.2 (0.8 bar)	left, middle, & right every 120m																								
This material specification describes the properties of product above indicated. This document contains general requirements, material description, drawing references, defect specification, and biological material requirements.																											

REVISIONS AND APPROVALS:

DATE	REV	REASON FOR CHANGE	ISSUED AND CONTROLLED BY: (name /function and signature)	APPROVED BY: (name /function and signature)
8/7/18	0	Initial Release	Yuander Ju/Director, Track Etch Membrane 	Kevin Wrigley/Director, Quality 



PRODUCT SPECIFICATION

Product PN	1215324, 1221413, 1215183, 1221414, 1221415, 1221416, 1222256	Mod. 984
Description	5.0 µm Polyester Track-Etched Membrane Discs and Sheets	Rev. 02

CUSTOMER APPROVAL:

We accept this material specification as a part of the agreed terms of delivery.

Company name _____

Approved by: _____
(Name, Function) (Signature)

Date _____
(Company stamp)

Please send back this document signed for approval. If we will not receive this specification signed, we consider the first order placed as implicit approval.