

THE NEW NAIL STATION



GVS

MADE IN ITALY

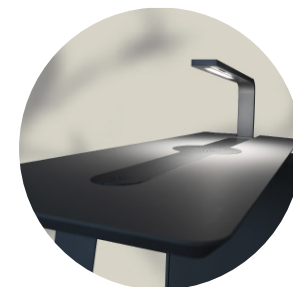


The new COSMO NAIL STATION is the brainchild of GVS S.p.A., a leading company in the field of filtration that has applied its 45 year expertise in air purification to offer a high quality product for the NAIL TECHNICIAN sector.

Work carried out by nail technicians involve risks due to the use of substances such as nail polish, adhesives, acetone, toluene, benzene, all of whose volatile residues dispersed in the air can be harmful to health.

Even the residual dust generated by the removal of these substances and by nail filing represents a long-term risk factor when absorbed through breathing.

GVS, which has a strong track record of creating products that protect users, has produced a professional workstation specifically designed to ensure a safe and comfortable working environment for nail technicians and their clients.



Led Lamp (dimnable)



Double electrical plug/ USB socket on customer side



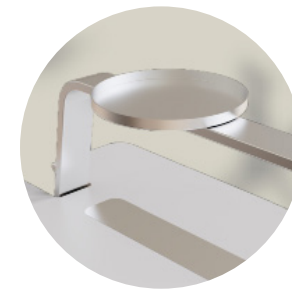
Storage compartment



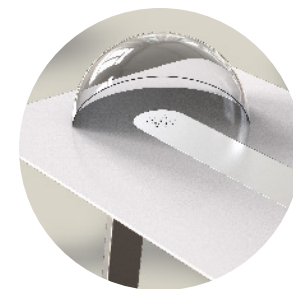
Suction plate: removable



Control Panel (4 speeds)



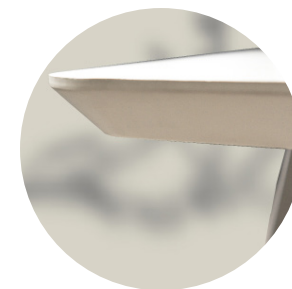
Repositionable tray (optional)



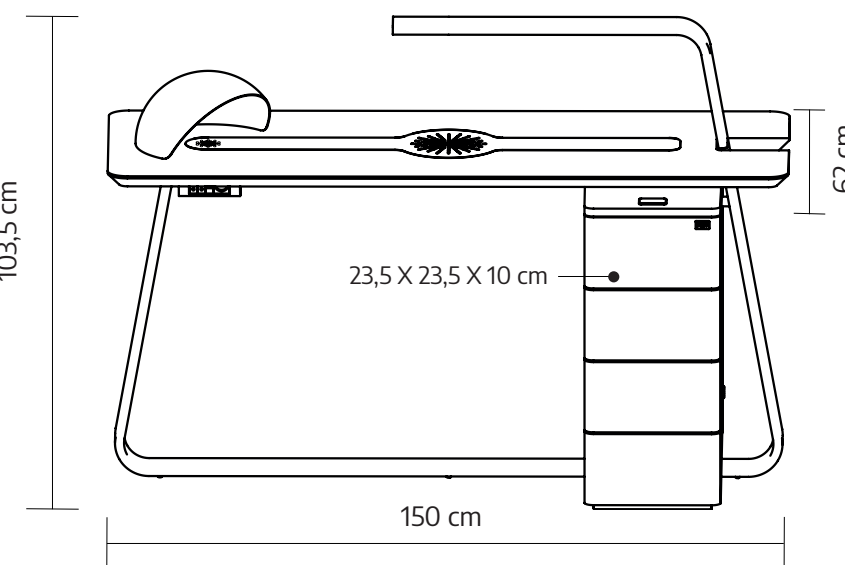
Transparent plexiglass vapor protection shell (optional)



Four **drawers**



Elegant design



The Cosmo table is constructed with innovative materials, carefully selected and tested for their specific resistance to aggressive substances, such as nail polish, adhesives, and acetone, which are common in a Nail Station.

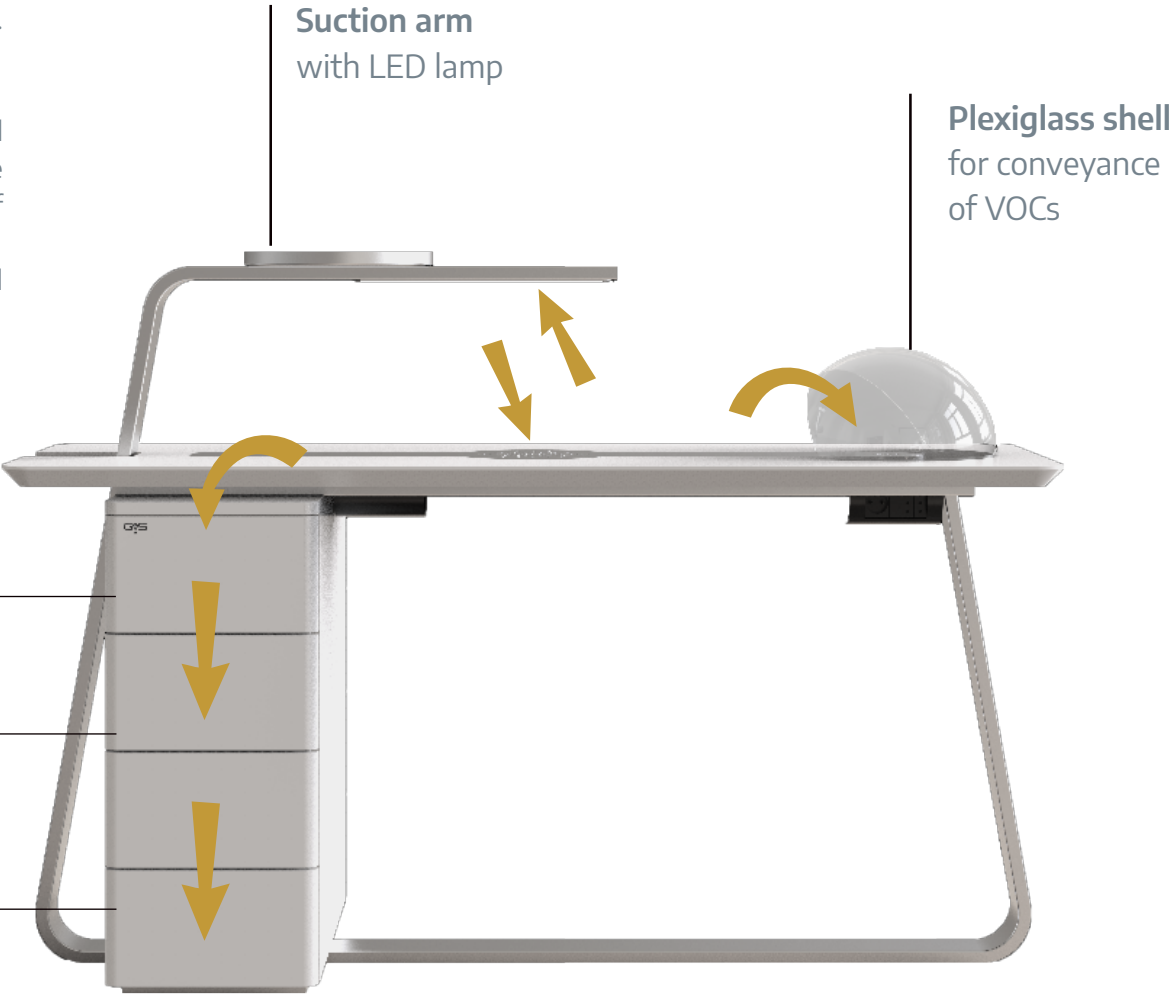
The top is made of MDF (Medium Density Fiberboard) coated with White Kos FENIX laminate. The drawer container, also made of MDF, is entirely covered with a White PVC film. The base structure that rises to form the suction arm, housing the LED lamp, is made of laser-cut steel, as is the perforated plate inserted into the work surface, where two additional suction points are located.

The steel components are finished with metal-effect paints, protected with a transparent gloss. The removable hood for VOC (Volatile Organic Compounds) conveyance is made of acrylic.

HOW DOES IT WORK

The vapours from solvents, fumes from chemicals, and dust produced by filing nails are aspirated and captured to be drawn into the double-stage filtration system. The table is equipped with 3 extraction zones. The first, from above, is located under the arm with the LED lamp.

The other two, from below, pass through the two-grid plate inserted into the top. The first grid is central to the work surface, and the second grid, is placed under a hood where open containers of products releasing toxic residues are accommodated. The hood serves to channel Volatile Organic Compounds (VOCs) and facilitates their extraction.



WHAT DOES IT PROTECT YOU FROM

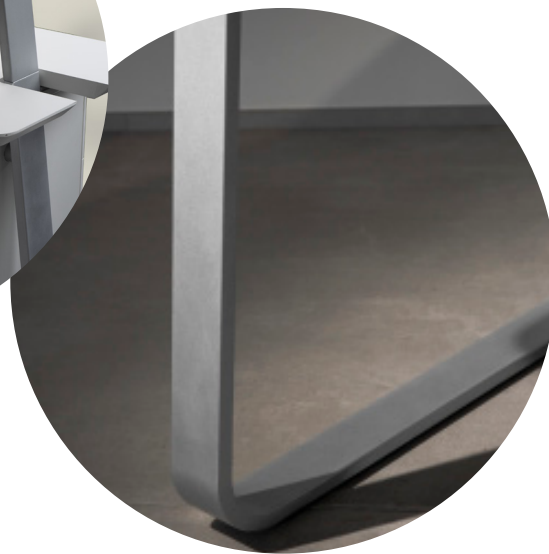
Cosmo is the only workstation equipped with molecular filters with activated carbon. Through the three extraction points, the filtering unit blocks dust and vapours as well as providing an exclusive system capable of neutralizing gases, and toxic vapours that would otherwise be dispersed into the environment. The extraction system allows for a clean and ergonomic workstation, free from tangled external tubes or precarious suction systems fixed under the work surface. Noise reduction in the system has been achieved through the acoustic insulation of certain components to minimize the impact on sound levels.

Chemicals detected in nail salons:

| Health risks: | Harmful substances: |
|---|---|
| Harmful if inhaled | <div></div> <div></div> |
| Toxic upon skin contact | <div></div> |
| Irritating to the eyes | <div></div> <div></div> <div></div> |
| Irritating to the skin | <div></div> |
| Risk of serious eye damage | <div></div> |
| May cause cancer | <div></div> |
| Danger of serious health damage in case of prolonged exposure | <div></div> <div></div> |
| May harm the fetus in the womb | <div></div> |
| Possible risk of reduced fertility | <div></div> |
| Damage to hormonal function | <div></div> |
| Irritation to the eyes, nose, skin, and throat | <div></div> <div></div> <div></div> <div></div> <div></div> |
| Numbness sensation | <div></div> <div></div> |
| Dizziness and lightheadedness | <div></div> <div></div> <div></div> <div></div> <div></div> |
| Early puberty in girls | <div></div> |
| Elevated heart rate | <div></div> |
| Insomnia | <div></div> <div></div> |
| Vomiting | <div></div> <div></div> <div></div> <div></div> |
| Headaches | <div></div> <div></div> <div></div> <div></div> <div></div> |
| Anxiety | <div></div> <div></div> <div></div> |
| Muscle fatigue | <div></div> <div></div> |
| Skin rash | <div></div> <div></div> |
| Shortening of the menstrual cycle | <div></div> |
| Tearing | <div></div> <div></div> |
| Pupil dilation | <div></div> <div></div> |

Legend:

- Acetone
- Ethyl methacrylate
- Benzene
- Formaldehyde
- Dibutyl phthalate
- Toluene



It is important to choose the best tools to create a positive and welcoming place for your clients, and a safe place to conduct your business. The comfort of the environment in which services are provided to people is one of the main factors contributing to the success of a business. The work environment influences well-being, and consequently, a comfortable and serene environment enhances customer satisfaction.

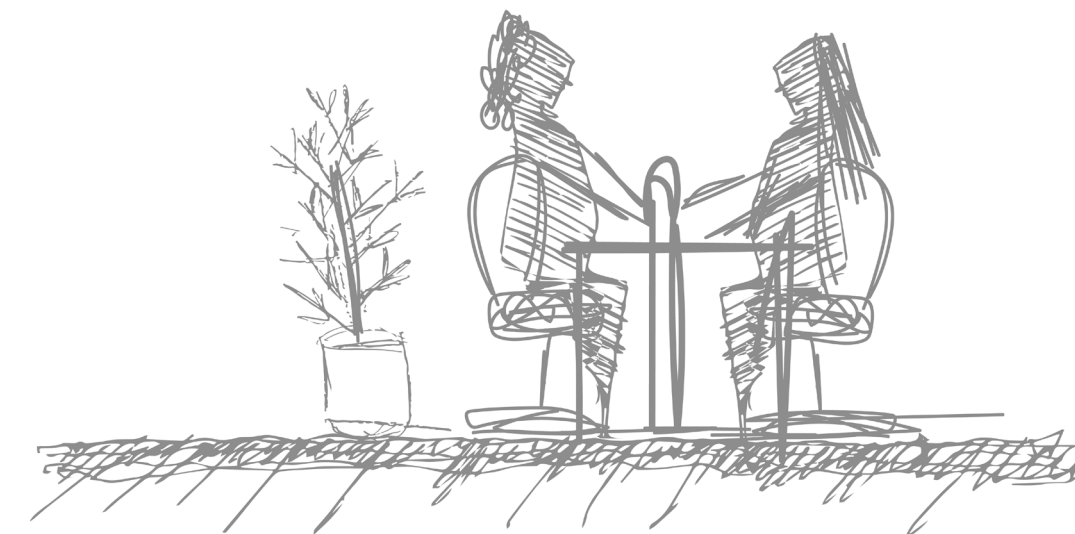
BREATHE FRESH, CHOOSE COSMO

- Because it provides your business with Health Protection Technology.
- Because you can offer more to your clients: the well-being of Clean Air.

CHANGE STYLE, CHOOSE COSMO.

- Because its design is new, dynamic, adapts to any environment, and enhances it.
 - Because its unique style will make your work comfortable.
- COSMO is your Nail Station where you can work safely to create beauty.

WHY COSMO



Via Roma 50 - 40069 Zola Predosa (BO) Italy
Tel. +39 051616311 - Fax: +39 0516176200
e-mail: gvs@gvs.com

cosmetics@gvs.com



